

Revision History			
RevID	ChID	Change Name	Date



mini-50 Data Center

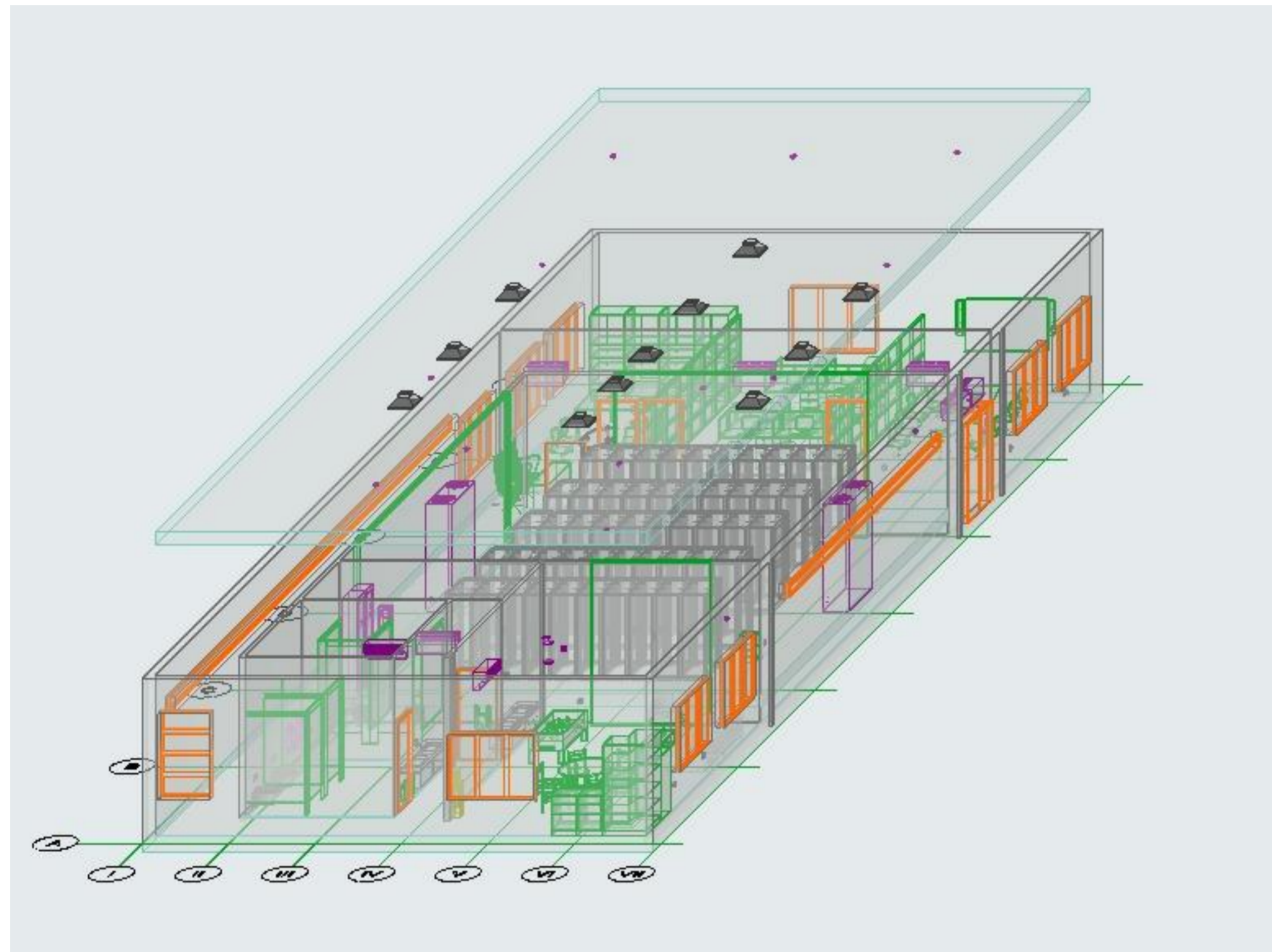
Floor area: 360 sq.m (3875 sq. ft)
Type: Efficient high-density layout model
Capacity: 50 42U Standard Smart Rack Servers
Power Distribution Units: 5
Heat: 2 Air Cooling Units (Server Room)
Floor: 600mm Raised Access (Server Room)
Back-up power: Yes
Fire-safety: Yes

Drawing Name
Physical Model

Designed by
 Eng. E.N. Mar-2026

Drawing Scale
1:100

Layout ID Revision
A.05.1



Revision History			
RevID	ChID	Change Name	Date



mini-50 Data Center

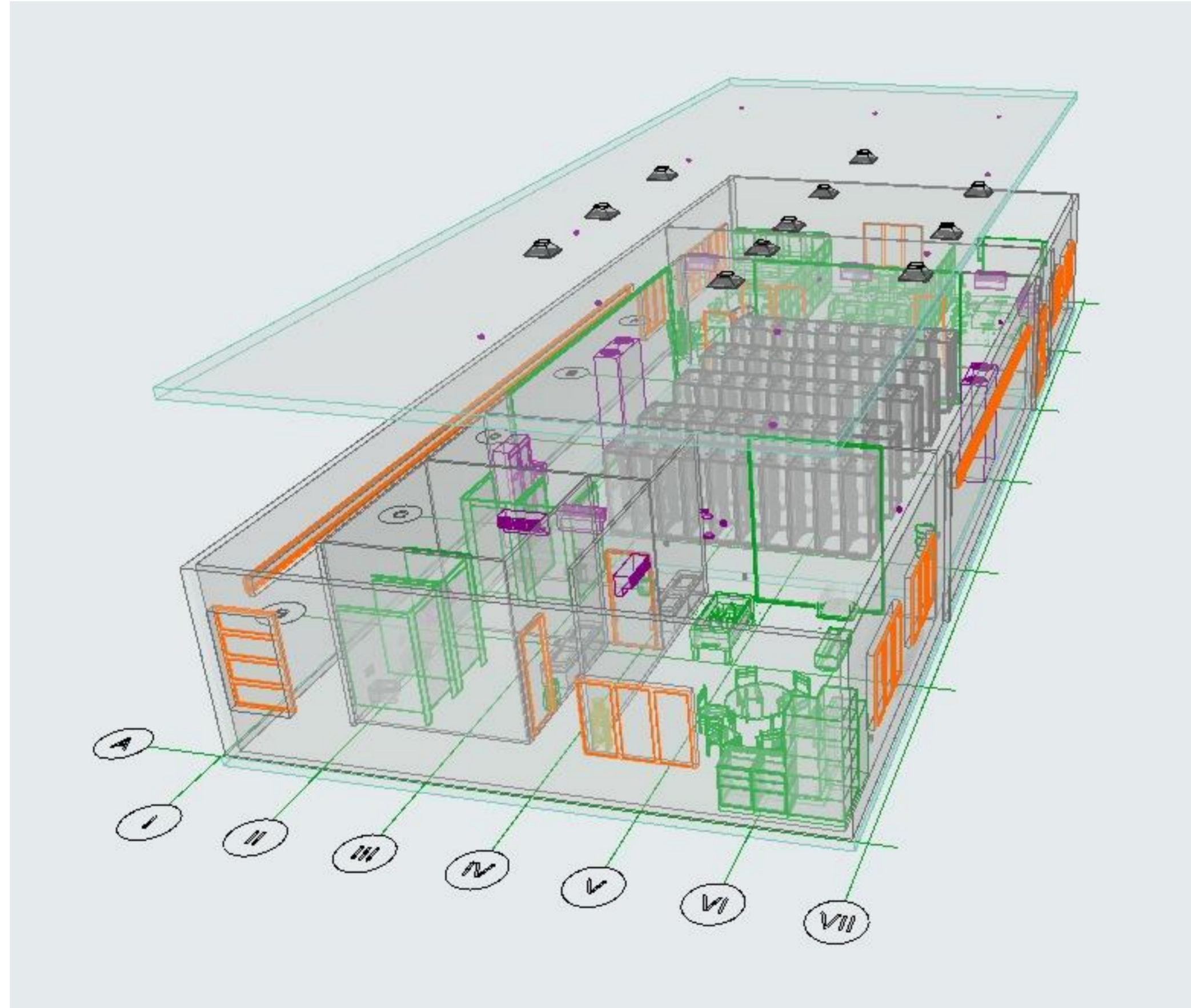
Floor area: 360 sq.m (3875 sq. ft)
Type: Efficient high-density layout model
Capacity: 50 42U Standard Smart Rack Servers
Power Distribution Units: 5
Heat: 2 Air Cooling Units (Server Room)
Floor: 600mm Raised Access (Server Room)
Back-up power: Yes
Fire-safety: Yes

Drawing Name
Physical Model - Frontal Axonometry

Designed by
 Eng. E.N. Mar-2026

Drawing Scale
1:100

Layout ID Revision
A.05.2



Revision History			
RevID	ChID	Change Name	Date



mini-50 Data Center



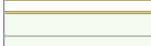
Floor area: 360 sq.m (3875 sq. ft)
Type: Efficient high-density layout model
Capacity: 50 42U Standard Smart Rack Servers
Power Distribution Units: 5
Heat: 2 Air Cooling Units (Server Room)
Floor: 600mm Raised Access (Server Room)
Back-up power: Yes
Fire-safety: Yes

Drawing Name
**Structural Analytical Model
 with Core**

Designed by
 Eng. E.N. Mar-2026

Drawing Scale
1:100

Layout ID Revision
A.05.3

Wall Schedule												
Construction				Identification			Quantities			Ratings		
Preview	Wall Type	Thickness [m]	Height [m]	Element ID	Classification	Position	Length [m]	Area [m2]	Net Volume [m3]	Fire Resistance Rating [minutes]	Thermal Transmittance [W/m²K]	Sound Transmission Class
	Brick Double Plastered	0.13	3.800	SW - 026	Wall	Interior	4.26	0.52	1.74	1 hour	0.3	55
	Brick Double Plastered	0.13	3.800	SW - 027	Wall	Interior	7.50	0.93	3.53	1 hour	0.3	55
	Brick Double Plastered	0.13	3.800	SW - 036	Wall	Exterior	1.23	0.14	0.54	1 hour	0.3	55
	Brick Double Plastered	0.13	3.800	SW - 037	Wall	Exterior	5.80	0.72	2.73	1 hour	0.3	55
	Brick Double Plastered	0.13	3.800	SW - 038	Wall	Interior	1.41	0.17	0.65	1 hour	0.3	55
Total:				6 pcs.			20.20 m	2.48 m²	9.19 m³			
	Generic Wall/Shell	0.23	3.800	SW - 028	Wall	Interior	58.33	13.07	41.95	2 hours	0.3	45
	Generic Wall/Shell	0.23	3.800	SW - 034	Wall	Exterior	11.73	2.60	8.67	2 hours	0.3	45
	Generic Wall/Shell	0.23	3.800	SW - 041	Wall	Exterior	11.73	2.61	9.23	2 hours	0.3	45
Total:				4 pcs.			81.79 m	18.28 m²	59.85 m³			
	Stud Partition	0.10	3.800	SW - 030	Wall	Interior	4.63	0.46	1.53	1 hour	0.3	45
	Stud Partition	0.10	3.800	SW - 031	Wall	Interior	6.21	0.62	2.31	1 hour	0.3	45
	Stud Partition	0.10	3.800	SW - 033	Wall	Interior	3.70	0.37	1.18	1 hour	0.3	45
	Stud Partition	0.10	3.800	SW - 035	Wall	Interior	3.48	0.34	1.27	1 hour	0.3	45
	Stud Partition	0.10	3.800	SW - 042	Wall	Exterior	11.40	1.14	3.67	1 hour	0.3	45
Total:				5 pcs.			29.42 m	2.93 m²	9.96 m³			
Grand Total:				15 pcs.			131.41 m	23.69 m²	79.00 m³			

Revision History			
RevID	ChID	Change Name	Date



mini-50 Data Center

Floor area: 360 sq.m (3875 sq. ft)
Type: Efficient high-density layout model
Capacity: 50 42U Standard Smart Rack Servers
Power Distribution Units: 5
Heat: 2 Air Cooling Units (Server Room)
Floor: 600mm Raised Access (Server Room)
Back-up power: Yes
Fire-safety: Yes

Drawing Name
Wall Schedule

Designed by
Eng. E.N. Mar-2026

Drawing Scale
1:1

Layout ID
A.06.1.1 Revision

Door Schedule		DOO - 002	DOO - 003	DOO - 004	DOO - 005	DOO - 006	DOO - 007	DOO - 008
Identification	Element ID	DOO - 002	DOO - 003	DOO - 004	DOO - 005	DOO - 006	DOO - 007	DOO - 008
	Classification	Door	Door	Door	Door	Door	Door	Door
	Opening Name	Entrance Door	Entrance Door	Entrance Door	Entrance Door	Entrance Door	Entrance Door	Metal Double Door
	Quantity	1	1	1	1	1	1	1
	W x H Size	0.900x2.100	0.900x2.100	0.900x2.100	0.900x2.100	0.900x2.100	0.900x2.100	1.500x2.300
Symbol	Orientation	L	R	L	L	R	R	L
	Plan							
Symbol	Elevation							
	Position	Interior	Interior	Interior	Interior	Interior	Interior	Exterior
Wall	Home Story Name	Ground Floor	Ground Floor	Ground Floor	Ground Floor	Ground Floor	Ground Floor	Ground Floor
	Elevation to Home Story	0.100	0.100	0.100	0.100	0.100	0.100	0.100
	Sill height	0.100	0.100	0.100	0.100	0.100	0.100	0.100
	Head height	2.200	2.200	2.200	2.200	2.200	2.200	2.400
	Wall Thickness	0.100	0.100	0.125	0.100	0.100	0.100	0.225
Surface	Wall Structure	Stud Partition	Stud Partition	Brick Double Plastered	Stud Partition	Stud Partition	Stud Partition	Generic Wall/Shell
	Frame Thickness	0.12	0.12	0.12	0.12	0.12	0.12	0.10
	Egress Dimensions	0.836x2.068	0.836x2.068	0.836x2.068	0.836x2.068	0.836x2.068	0.836x2.068	1.436x2.268
Renovation Status	Nominal Surface Area	1.89	1.89	1.89	1.89	1.89	1.89	3.45
	Surfaces (All)	Metal - Stainless Steel; Metal - Iron; Metal - Nickel	Metal - Stainless Steel; Metal - Iron; Metal - Nickel	Metal - Stainless Steel; Metal - Iron; Metal - Nickel	Metal - Stainless Steel; Metal - Iron; Metal - Nickel	Metal - Stainless Steel; Metal - Iron; Metal - Nickel	Metal - Stainless Steel; Metal - Iron; Metal - Nickel	Metal - Iron; Metal - Aluminium
		New	New	New	New	New	New	

Revision History			
RevID	ChID	Change Name	Date



mini-50 Data Center

Floor area: 360 sq.m (3875 sq. ft)
Type: Efficient high-density layout model
Capacity: 50 42U Standard Smart Rack Servers
Power Distribution Units: 5
Heat: 2 Air Cooling Units (Server Room)
Floor: 600mm Raised Access (Server Room)
Back-up power: Yes
Fire-safety: Yes

Drawing Name
Door Schedule

Designed by
 Eng. E.N. Mar-2026

Drawing Scale
1:1

Layout ID
A.06.1.2 Revision

Window Schedule													
Identification	Element ID	WD - 001	WD - 002	WD - 003	WD - 004	WD - 005	WD - 006	WD - 007	WD - 008	WD - 010	WD - 011	WD - 012	WD - 013
	Classification	Window	Window	Window	Window	Window	Window	Window	Window	Window	Window	Window	Window
	Opening Name	Horizontal Multi-Sash Window	Horizontal Multi-Sash Window	Horizontal Multi-Sash Window	Horizontal Multi-Sash Window	Horizontal Multi-Sash Window	Horizontal Multi-Sash Window	Horizontal Multi-Sash Window	Horizontal Multi-Sash Window	Vertical Multi-Sash Window	Horizontal Multi-Sash Window	Window	Window
	Quantity	1	1	1	1	1	1	1	1	1	1	1	1
Symbol	W x H Size	2.000x1.500	2.000x1.500	2.000x1.500	2.000x1.500	2.000x1.500	2.000x1.500	2.000x1.500	2.000x1.500	1.183x2.000	2.000x1.500	9.931x0.350	18.422x0.350
	2D Symbol												
Position	3D Back View												
	Position	Exterior	Exterior	Exterior	Exterior	Exterior	Exterior	Exterior	Exterior	Exterior	Exterior	Exterior	Exterior
Wall	Home Story Name	Ground Floor	Ground Floor	Ground Floor	Ground Floor	Ground Floor	Ground Floor	Ground Floor	Ground Floor	Ground Floor	Ground Floor	Ground Floor	Ground Floor
	Elevation to Home Story	1.000	1.000	1.000	1.000	1.000	1.000	1.000	1.000	1.000	1.000	2.500	2.500
Surface	Sill height	1.000	1.000	1.000	1.000	1.000	1.000	1.000	1.000	1.000	1.000	2.500	2.500
	Head height	2.500	2.500	2.500	2.500	2.500	2.500	2.500	2.500	3.000	2.500	2.850	2.850
Status	Frame Thickness	0.05	0.05	0.05	0.05	0.05	0.05	0.05	0.05	0.05	0.05	0.05	0.05
	Wall Structure	Generic Wall/Shell	Generic Wall/Shell	Generic Wall/Shell	Generic Wall/Shell	Generic Wall/Shell	Generic Wall/Shell	Generic Wall/Shell	Generic Wall/Shell	Generic Wall/Shell	Generic Wall/Shell	Generic Wall/Shell	Generic Wall/Shell
Ratings	Wall Thickness	0.225	0.225	0.225	0.225	0.225	0.225	0.225	0.225	0.225	0.225	0.225	0.225
	Nominal Surface Area	3.00	3.00	3.00	3.00	3.00	3.00	3.00	3.00	2.37	3.00	3.48	6.45
Ratings	Surfaces (All)	Wood - Pine Grained Horizo...	Wood - Pine Grained Horizo...	Wood - Pine Grained Horizo...	Wood - Pine Grained Horizo...	Wood - Pine Grained Horizo...	Wood - Pine Grained Horizo...	Wood - Pine Grained Horizo...	Wood - Pine Grained Horizo...	Wood - Pine Grained Horizo...	Wood - Pine Grained Horizo...	Wood - Pine Grained Horizo...	Wood - Pine Grained Horizo...
	Fire Resistance Rating	1 hour	1 hour	1 hour	1 hour	1 hour	1 hour	1 hour	1 hour	1 hour	1 hour	1 hour	1 hour
Ratings	Thermal Transmittance [W/m²K]	1.0	1.0	1.0	1.0	1.0	1.0	1.0	1.0	1.0	1.0	1.0	1.0
	Sound Transmission Class	35	35	35	35	35	35	35	35	35	35	35	35

Revision History			
RevID	ChID	Change Name	Date



mini-50 Data Center

Floor area: 360 sq.m (3875 sq. ft)
Type: Efficient high-density layout model
Capacity: 50 42U Standard Smart Rack Servers
Power Distribution Units: 5
Heat: 2 Air Cooling Units (Server Room)
Floor: 600mm Raised Access (Server Room)
Back-up power: Yes
Fire-safety: Yes

Drawing Name
Window Schedule

Designed by
 Eng. E.N. Mar-2026

Drawing Scale
1:1

Layout ID Revision
A.06.1.3

Object Inventory							Symbol	
Identification							Floor Plan	3D Front Axonometry
Element ID	Classification	Object Name	Quantity	Length (A)	Width (B)	Height (H)		
FU - 002	Building Element Pro...	42u_smartrack_stan...	50	2.193	1.938	2.593		
FU - 004	Building Element Pro...	Sanitary_Hand-Hair-...	2	0.344	0.202	0.557		
FU - 005	Building Element Pro...	Sanitary_Basins_Mir...	2	1.800	0.515	0.476		
FU - 007	Building Element Pro...	Commercial Bath Stall	4	1.200	1.400	2.400		
FU - 008	Building Element Pro...	Urinal 04 16	2	0.400	0.305	0.665		
FU - 014	Building Element Pro...	Furniture_Sofas-Arm...	1	2.439	1.073	0.847		
FU - 017	Furniture	Coffee Table 05	1	1.100	0.450	0.380		
FU - 022	Furniture	Standing Cabinet Co...	1	1.000	1.000	2.000		
FU - 023	Furniture	Base Cabinet Block	2	0.600	0.580	0.800		
FU - 024	Furniture	Refrigerator 17	1	0.600	0.600	1.500		
FU - 027	Building Element Pro...	Glass Pane	1	2.798	0.125	3.800		
FU - 027	Building Element Pro...	Glass Pane	1	5.869	0.125	3.800		
FU - 027	Building Element Pro...	Glass Pane	1	9.841	0.125	3.800		
FU - 028	Furniture	Dining Table Round 17	1	2.200	2.200	0.800		
FU - 029	Furniture	Wall Cabinet End 01	1	0.380	0.380	0.600		
FU - 037	Furniture	Sofa Chair 04	1	0.800	0.800	0.800		
FU - 040	Furniture	Desk 16	1	1.500	0.435	0.720		
FU - 042	Furniture	Office Chair 03	2	0.640	0.800	1.305		
FU - 043	Furniture	Office Layout Linear	2	2.496	1.154	1.150		
FU - 045	Building Element Pro...	bT Fussball Table 16	1	1.600	0.800	0.700		
FU - 055	Furniture	Office Chair 05	8	0.540	0.560	0.865		
FU - 056	Furniture	Office Partition Panel	4	3.200	0.075	1.810		
FU - 057	Furniture	Digital Board	1	2.290	0.030	1.200		
FU - 058	Furniture	Office Desk L-Shape...	1	2.000	1.300	0.750		
FU - 059	Furniture	Office Chair 02	1	0.700	0.700	1.000		
FU - 060	Building Element Pro...	Pressurized Extingui...	1	0.280	0.200	0.635		
FU - 061	Building Element Pro...	Pressurized Extingui...	1	0.270	0.180	0.635		
FU - 062	Building Element Pro...	Pressurized Extingui...	1	0.280	0.200	0.635		
FU - 063	Furniture	Office Cabinet	1	0.800	0.600	2.000		
FU - 064	Furniture	Office Cabinet	1	0.800	0.600	2.000		
FU - 065	Furniture	Office Cabinet	2	0.800	0.600	2.000		
FU - 067	Furniture	Office Chair 05	2	0.540	0.560	0.865		
FU - 073	Distribution Flow Ele...	Single Package Heat...	1	0.600	1.500	2.500		
FU - 074	Distribution Flow Ele...	Single Package Heat...	1	0.600	1.500	2.500		
FU - 075	Distribution Flow Ele...	MCC Power Monitori...	1	0.500	0.375	2.290		
FU - 076	Distribution Flow Ele...	MCC Power Monitori...	1	0.500	0.375	2.290		
FU - 077	Distribution Flow Ele...	Electricity Meter	1	0.300	0.150	0.500		
FU - 078	Distribution Flow Ele...	Electric Air Curtain	1	0.900	0.320	0.420		
FU - 079	Distribution Flow Ele...	Electric Air Curtain	1	0.900	0.320	0.420		
FU - 080	Distribution Flow Ele...	Electric Air Curtain	1	0.900	0.320	0.420		
FU - 081	Distribution Flow Ele...	Electric Air Curtain	1	0.900	0.320	0.420		
FU - 082	Distribution Flow Ele...	Electric Air Curtain	1	0.900	0.320	0.420		
FU - 083	Distribution Flow Ele...	Electric Air Curtain	1	0.900	0.320	0.420		
FU - 085	Distribution Flow Ele...	Classroom Air Condi...	2	0.800	0.400	0.400		
FU - 095	Distribution Flow Ele...	Square Louver Face ...	1	0.600	0.600	0.200		
FU - 096	Distribution Flow Ele...	Square Louver Face ...	1	0.600	0.600	0.200		
FU - 097	Distribution Flow Ele...	Square Louver Face ...	1	0.600	0.600	0.200		
FU - 098	Distribution Flow Ele...	Square Louver Face ...	1	0.600	0.600	0.200		
FU - 099	Distribution Flow Ele...	Square Louver Face ...	1	0.600	0.600	0.200		
FU - 100	Distribution Flow Ele...	Square Louver Face ...	1	0.600	0.600	0.200		
FU - 101	Distribution Flow Ele...	Square Louver Face ...	4	0.600	0.600	0.150		
FU - 102	Distribution Flow Ele...	Square Louver Face ...	1	0.600	0.600	0.200		
FU - 103	Building Element Pro...	Smoke and Heat Det...	1	0.118	0.118	0.065		
FU - 104	Building Element Pro...	Smoke and Heat Det...	1	0.118	0.118	0.065		
FU - 105	Building Element Pro...	Smoke and Heat Det...	1	0.118	0.118	0.065		
FU - 106	Building Element Pro...	Smoke and Heat Det...	1	0.118	0.118	0.065		
FU - 107	Building Element Pro...	Smoke and Heat Det...	1	0.118	0.118	0.065		
FU - 108	Building Element Pro...	Smoke and Heat Det...	1	0.118	0.118	0.065		
FU - 109	Building Element Pro...	Smoke and Heat Det...	1	0.118	0.118	0.065		
FU - 110	Building Element Pro...	Smoke and Heat Det...	1	0.118	0.118	0.065		
FU - 111	Building Element Pro...	Smoke and Heat Det...	1	0.118	0.118	0.065		
FU - 112	Building Element Pro...	Smoke and Heat Det...	1	0.118	0.118	0.065		
FU - 113	Building Element Pro...	Smoke and Heat Det...	1	0.118	0.118	0.065		
FU - 114	Building Element Pro...	Alarm Siren	1	0.092	0.071	1.000		
FU - 116	Building Element Pro...	Alarm Siren	1	0.092	0.071	1.000		
FU - 117	Building Element Pro...	Alarm Siren	1	0.092	0.071	1.000		
FU - 118	Building Element Pro...	Fire Alarm	1	0.125	0.030	0.125		
FU - 119	Building Element Pro...	Fire Alarm	1	0.125	0.030	0.125		
FU - 120	Building Element Pro...	Fire Alarm	1	0.125	0.030	0.125		
FU - 121	Building Element Pro...	Floor Outlet US	2	0.254	0.254	0.991		
FU - 122	Building Element Pro...	Floor Outlet US	1	0.254	0.254	0.991		
FU - 123	Building Element Pro...	Floor Outlet US	1	0.254	0.254	0.991		
FU - 126	Building Element Pro...	Floor Outlet US	1	0.254	0.254	0.991		
FU - 127	Building Element Pro...	Electrical Switch Bra...	2	0.078	0.055	0.120		
FU - 128	Building Element Pro...	Electrical Switch Bra...	1	0.078	0.055	0.120		
FU - 129	Building Element Pro...	Electrical Switch Bra...	3	0.078	0.055	0.120		
FU - 130	Building Element Pro...	Electrical Switch Bra...	1	0.078	0.055	0.120		
FU - 131	Building Element Pro...	Electrical Switch Bra...	1	0.078	0.055	0.120		
FU - 132	Building Element Pro...	Electrical Switch Bra...	5	0.078	0.055	0.120		
FU - 133	Building Element Pro...	Electrical Switch Bra...	2	0.078	0.055	0.120		
FU - 134	Building Element Pro...	Electrical Switch Bra...	2	0.078	0.055	0.120		
FU - 135	Building Element Pro...	Electrical Switch Bra...	2	0.078	0.055	0.120		
WE - 001	Covering	Cased End	1	---	0.320	1.000		
WE - 002	Covering	Cased End	1	---	0.320	1.000		

Revision History			
RevID	ChID	Change Name	Date



mini-50 Data Center

Floor area: 360 sq.m (3875 sq. ft)
Type: Efficient high-density layout model
Capacity: 50 42U Standard Smart Rack Servers
Power Distribution Units: 5
Heat: 2 Air Cooling Units (Server Room)
Floor: 600mm Raised Access (Server Room)
Back-up power: Yes
Fire-safety: Yes

Drawing Name
Object Inventory

Designed by
 Eng. E.N. Mar-2026

Drawing Scale
1:1

Layout ID Revision
A.06.1.4

All Finishes					
Name	Color Sample	Color [R,G,B]	Paint	Hatching	Exposed Area
Brick - Common Bond		180,135,120	<input type="checkbox"/>	Brick - Common Bond - 20.3/6.76	0.37
Ceiling - Tile 60x60		255,255,255	<input checked="" type="checkbox"/>	Grid 60x60	0.50
Ceramic - Porcelain		247,253,255	<input checked="" type="checkbox"/>	Background	6.43
Concrete - 02		127,127,127	<input type="checkbox"/>	Grid 100x100	16.47
Concrete - 04		168,169,158	<input checked="" type="checkbox"/>	Grid 50x100	3.33
Concrete - 10		96,96,96	<input checked="" type="checkbox"/>	Concrete Pavement 01	0.00
Generated from GDL		---	<input checked="" type="checkbox"/>	Generated from GDL	1,220.95
Generated from pen		2,158,33	<input checked="" type="checkbox"/>	Generated from pen	7.07
Glass - Blue		132,173,249	<input checked="" type="checkbox"/>	Background	1.85
Glass - Clear Fast		240,247,243	<input checked="" type="checkbox"/>	Background	265.47
Leather - Tabac		130,51,19	<input checked="" type="checkbox"/>	Background	2.78
Metal - Aluminium		234,225,225	<input checked="" type="checkbox"/>	Background	6.67
Metal - Bronze		164,103,43	<input checked="" type="checkbox"/>	Background	2.00
Metal - Chrome 01		191,191,191	<input checked="" type="checkbox"/>	Background	43.88
Metal - Gold		253,210,100	<input checked="" type="checkbox"/>	Background	2.31
Metal - Iron		75,78,84	<input checked="" type="checkbox"/>	Background	10.58
Metal - Nickel		203,196,180	<input checked="" type="checkbox"/>	Background	21.06
Metal - Stainless Steel		181,182,193	<input checked="" type="checkbox"/>	Background	33.89
Metal - Steel		134,141,142	<input checked="" type="checkbox"/>	Background	0.08
Metal - Zinc		170,172,173	<input checked="" type="checkbox"/>	Background	0.00
Paint - Anthracite		46,46,46	<input checked="" type="checkbox"/>	Background	0.44
Paint - Bordeaux		146,14,47	<input checked="" type="checkbox"/>	Background	0.07
Paint - Cobalt Blue		7,96,184	<input checked="" type="checkbox"/>	Background	14.14
Paint - Dark Gray		91,91,91	<input checked="" type="checkbox"/>	Background	8.50
Paint - Glossy White		255,255,255	<input checked="" type="checkbox"/>	Background	896.78
Paint - Golden Ochre		204,140,50	<input type="checkbox"/>	Background	455.61
Paint - Ivory Black		0,0,0	<input checked="" type="checkbox"/>	Background	40.25
Paint - Lead Oxide Yellow		249,197,17	<input checked="" type="checkbox"/>	Background	2.96
Paint - Light Gray		168,168,168	<input checked="" type="checkbox"/>	Background	2.06
Paint - Light Gray		168,168,168	<input type="checkbox"/>	Background	465.54
Paint - Pale Blue		162,197,215	<input checked="" type="checkbox"/>	Background	1.96
Paint - Pink Blush		232,174,155	<input checked="" type="checkbox"/>	Background	1.39
Paint - Royal Blue		21,85,234	<input checked="" type="checkbox"/>	Background	18.15
Paint - Titanium White		255,255,255	<input checked="" type="checkbox"/>	Background	122.96
Paint - Vermilion		249,0,0	<input checked="" type="checkbox"/>	Background	1.52
Plastic - Laminate		230,198,166	<input checked="" type="checkbox"/>	Background	1.70
Stucco - White Fine		255,255,255	<input type="checkbox"/>	Background	347.11
Stucco - Yellow Rough		255,209,125	<input checked="" type="checkbox"/>	Background	0.01
Textile - 01		216,207,199	<input checked="" type="checkbox"/>	Background	20.21
Tiles - Light Brown 15x15		190,170,163	<input type="checkbox"/>	Grid 15x15	322.52
Wood - Pine Grained Horizontal		218,202,173	<input checked="" type="checkbox"/>	Background	101.87
Wood - Walnut Horizontal		104,87,74	<input checked="" type="checkbox"/>	Background	9.70
Total:				Grand Total:	4,481.14 m²

Revision History			
RevID	ChID	Change Name	Date



mini-50 Data Center

Floor area: 360 sq.m (3875 sq. ft)
Type: Efficient high-density layout model
Capacity: 50 42U Standard Smart Rack Servers
Power Distribution Units: 5
Heat: 2 Air Cooling Units (Server Room)
Floor: 600mm Raised Access (Server Room)
Back-up power: Yes
Fire-safety: Yes

Drawing Name
All Finishes

Designed by
 Eng. E.N. Mar-2026

Drawing Scale
1:1

Layout ID
A.06.3.1 Revision

Finishes by Elements				
Type	Element ID	Finish	Exposed Area	Painted
Door				
	DOO - 002	Metal - Iron	0.71	<input checked="" type="checkbox"/>
	DOO - 002	Metal - Nickel	3.51	<input checked="" type="checkbox"/>
	DOO - 002	Metal - Stainless Steel	0.22	<input checked="" type="checkbox"/>
	DOO - 003	Metal - Iron	0.71	<input checked="" type="checkbox"/>
	DOO - 003	Metal - Nickel	3.51	<input checked="" type="checkbox"/>
	DOO - 003	Metal - Stainless Steel	0.22	<input checked="" type="checkbox"/>
	DOO - 004	Metal - Iron	0.64	<input checked="" type="checkbox"/>
	DOO - 004	Metal - Nickel	3.51	<input checked="" type="checkbox"/>
	DOO - 004	Metal - Stainless Steel	0.22	<input checked="" type="checkbox"/>
	DOO - 005	Metal - Iron	0.71	<input checked="" type="checkbox"/>
	DOO - 005	Metal - Nickel	3.51	<input checked="" type="checkbox"/>
	DOO - 005	Metal - Stainless Steel	0.22	<input checked="" type="checkbox"/>
	DOO - 006	Metal - Iron	0.71	<input checked="" type="checkbox"/>
	DOO - 006	Metal - Nickel	3.51	<input checked="" type="checkbox"/>
	DOO - 006	Metal - Stainless Steel	0.22	<input checked="" type="checkbox"/>
	DOO - 007	Metal - Iron	0.71	<input checked="" type="checkbox"/>
	DOO - 007	Metal - Nickel	3.51	<input checked="" type="checkbox"/>
	DOO - 007	Metal - Stainless Steel	0.22	<input checked="" type="checkbox"/>
	DOO - 008	Metal - Aluminium	6.59	<input checked="" type="checkbox"/>
	DOO - 008	Metal - Iron	2.43	<input checked="" type="checkbox"/>
Slab				
	SLA - 002	Paint - Golden Ochre	119.67	<input type="checkbox"/>
	SLA - 002	Paint - Light Gray	121.61	<input type="checkbox"/>
	SLA - 003	Concrete - 02	16.47	<input type="checkbox"/>
	SLA - 003	Stucco - White Fine	347.02	<input type="checkbox"/>
	SLA - 003	Tiles - Light Brown 15x15	322.52	<input type="checkbox"/>
	SLA - 005	Paint - Golden Ochre	335.94	<input type="checkbox"/>
	SLA - 005	Paint - Light Gray	343.93	<input type="checkbox"/>
Wall				
	SW - 026	Paint - Glossy White	25.97	<input checked="" type="checkbox"/>
	SW - 027	Paint - Glossy White	52.30	<input checked="" type="checkbox"/>
	SW - 028	Paint - Glossy White	393.70	<input checked="" type="checkbox"/>
	SW - 030	Paint - Glossy White	30.42	<input checked="" type="checkbox"/>
	SW - 031	Paint - Glossy White	43.21	<input checked="" type="checkbox"/>
	SW - 033	Paint - Glossy White	22.89	<input checked="" type="checkbox"/>
	SW - 034	Paint - Glossy White	81.29	<input checked="" type="checkbox"/>
	SW - 035	Paint - Glossy White	22.98	<input checked="" type="checkbox"/>
	SW - 036	Paint - Glossy White	8.98	<input checked="" type="checkbox"/>
	SW - 037	Brick - Common Bond	0.37	<input type="checkbox"/>
	SW - 037	Paint - Glossy White	40.60	<input checked="" type="checkbox"/>
	SW - 037	Stucco - White Fine	0.09	<input type="checkbox"/>
	SW - 038	Paint - Glossy White	9.14	<input checked="" type="checkbox"/>
	SW - 041	Paint - Glossy White	85.24	<input checked="" type="checkbox"/>
	SW - 042	Paint - Glossy White	74.90	<input checked="" type="checkbox"/>
Window				
	WD - 001	Glass - Clear Fast	9.76	<input checked="" type="checkbox"/>
	WD - 001	Wood - Pine Grained Horizontal	1.59	<input checked="" type="checkbox"/>
	WD - 002	Glass - Clear Fast	9.76	<input checked="" type="checkbox"/>
	WD - 002	Wood - Pine Grained Horizontal	1.59	<input checked="" type="checkbox"/>
	WD - 003	Glass - Clear Fast	9.76	<input checked="" type="checkbox"/>
	WD - 003	Wood - Pine Grained Horizontal	1.59	<input checked="" type="checkbox"/>
	WD - 004	Glass - Clear Fast	9.76	<input checked="" type="checkbox"/>
	WD - 004	Wood - Pine Grained Horizontal	1.59	<input checked="" type="checkbox"/>
	WD - 005	Glass - Clear Fast	9.76	<input checked="" type="checkbox"/>
	WD - 005	Wood - Pine Grained Horizontal	1.59	<input checked="" type="checkbox"/>
	WD - 006	Glass - Clear Fast	9.76	<input checked="" type="checkbox"/>
	WD - 006	Wood - Pine Grained Horizontal	1.59	<input checked="" type="checkbox"/>
	WD - 007	Glass - Clear Fast	9.76	<input checked="" type="checkbox"/>
	WD - 007	Wood - Pine Grained Horizontal	1.59	<input checked="" type="checkbox"/>
	WD - 008	Glass - Clear Fast	9.76	<input checked="" type="checkbox"/>
	WD - 008	Wood - Pine Grained Horizontal	1.59	<input checked="" type="checkbox"/>
	WD - 010	Glass - Clear Fast	7.17	<input checked="" type="checkbox"/>
	WD - 010	Wood - Pine Grained Horizontal	1.94	<input checked="" type="checkbox"/>
	WD - 011	Glass - Clear Fast	9.76	<input checked="" type="checkbox"/>
	WD - 011	Wood - Pine Grained Horizontal	1.59	<input checked="" type="checkbox"/>
	WD - 012	Glass - Clear Fast	8.22	<input checked="" type="checkbox"/>
	WD - 012	Wood - Pine Grained Horizontal	4.65	<input checked="" type="checkbox"/>
	WD - 013	Glass - Clear Fast	15.36	<input checked="" type="checkbox"/>
	WD - 013	Wood - Pine Grained Horizontal	8.56	<input checked="" type="checkbox"/>
Grand Total:			2,682.88 m²	

Revision History			
RevID	ChID	Change Name	Date



mini-50 Data Center

Floor area: 360 sq.m (3875 sq. ft)
Type: Efficient high-density layout model
Capacity: 50 42U Standard Smart Rack Servers
Power Distribution Units: 5
Heat: 2 Air Cooling Units (Server Room)
Floor: 600mm Raised Access (Server Room)
Back-up power: Yes
Fire-safety: Yes

Drawing Name
Finishes by Elements

Designed by
 Eng. E.N. Mar-2026

Drawing Scale
1:1

Layout ID Revision
A.06.3.2

Finishes of Doors and Windows

Type	Element ID	3D Front Axonometry	Surface Name	Surface Color [Sample]	Surface Color [R,G,B]	Casing Total Area
Door						
	DOO - 002		Metal - Iron		75,78,84	1.23
	DOO - 002		Metal - Nickel		203,196,180	3.54
	DOO - 002		Metal - Stainless Steel		181,182,193	0.22
	DOO - 003		Metal - Iron		75,78,84	1.23
	DOO - 003		Metal - Nickel		203,196,180	3.54
	DOO - 003		Metal - Stainless Steel		181,182,193	0.22
	DOO - 004		Metal - Iron		75,78,84	1.23
	DOO - 004		Metal - Nickel		203,196,180	3.54
	DOO - 004		Metal - Stainless Steel		181,182,193	0.22
	DOO - 005		Metal - Iron		75,78,84	1.23
	DOO - 005		Metal - Nickel		203,196,180	3.54
	DOO - 005		Metal - Stainless Steel		181,182,193	0.22
	DOO - 006		Metal - Iron		75,78,84	1.23
	DOO - 006		Metal - Nickel		203,196,180	3.54
	DOO - 006		Metal - Stainless Steel		181,182,193	0.22
	DOO - 007		Metal - Iron		75,78,84	1.23
	DOO - 007		Metal - Nickel		203,196,180	3.54
	DOO - 007		Metal - Stainless Steel		181,182,193	0.22
	DOO - 008		Metal - Aluminium		234,225,225	6.64
	DOO - 008		Metal - Iron		75,78,84	4.35
Window						
	WD - 001		Wood - Pine Grained Horizontal		218,202,173	1.94
	WD - 002		Wood - Pine Grained Horizontal		218,202,173	1.94
	WD - 003		Wood - Pine Grained Horizontal		218,202,173	1.94
	WD - 004		Wood - Pine Grained Horizontal		218,202,173	1.94
	WD - 005		Wood - Pine Grained Horizontal		218,202,173	1.94
	WD - 006		Wood - Pine Grained Horizontal		218,202,173	1.94
	WD - 007		Wood - Pine Grained Horizontal		218,202,173	1.94
	WD - 008		Wood - Pine Grained Horizontal		218,202,173	1.94
	WD - 010		Wood - Pine Grained Horizontal		218,202,173	1.94
	WD - 011		Wood - Pine Grained Horizontal		218,202,173	1.94
	WD - 012		Wood - Pine Grained Horizontal		218,202,173	5.68
	WD - 013		Wood - Pine Grained Horizontal		218,202,173	10.43
						76.44 m²

Revision History			
RevID	ChID	Change Name	Date



mini-50 Data Center

Floor area: 360 sq.m (3875 sq. ft)
Type: Efficient high-density layout model
Capacity: 50 42U Standard Smart Rack Servers
Power Distribution Units: 5
Heat: 2 Air Cooling Units (Server Room)
Floor: 600mm Raised Access (Server Room)
Back-up power: Yes
Fire-safety: Yes

Drawing Name
Finishes of Doors and Windows

Designed by
 Eng. E.N. Mar-2026

Drawing Scale
1:1

Layout ID Revision
A.06.3.3